



A CLINICIAN'S GUIDE TO SYNERGETIC WORKFLOW FROM SURGERY TO FINAL

NAVIGATION™ SYNERGY



GUIDED WORKFLOW

*Synergetic workflow from diagnostically planned guided surgery,
chairside conversions to final prosthetics*



Why Choose the Synergy Guided Workflow

SIGNIFICANTLY REDUCED TISSUE REFLECTIONS

UKF bone seating volume is reduced by up to 80% without sacrificing stability. The buccal only, reduced bone seating area, requires minimal tissue reflection for efficient seating of the base guide. This unique feature reduces the traditional time required for surgery and the conversion process, while aiding in patient recovery with decreased morbidity.



FAST AND ACCURATE SEATING BASE GUIDE

The UKF (Unilateral Key Fixation) base guide is fixated on only two 10x12mm reflected areas. It is stabilized by a tooth / bone or denture based aligner for faster and more accurate seating. This extremely accurate, dual verified, bone and tooth aligned seating, allows for a streamlined and efficient chairside conversion process.

TRUE SEQUENTIAL WORKFLOW

A true sequential workflow allows the surgeon to complete the Synergy surgery without the need to check occlusion. The conversion process is guided by the accurate seating of the UKF guide and not by closing the patient into occlusion by hand with a nose-chin measured vertical. In case of a dual arch the entire case is surgically sequenced and not converted one arch at a time.

In documented “simple cases” a dentate single arch case (surgery to conversion) is regularly processed in 120 to 160 minutes, while the conversion process is reduced to between 20 and 30 minutes. Dual arch cases are regularly processed with our team in 4 hours or less.

10-DAY PROCESSING FROM REVIEW TO SURGERY

The NavaGation™ team has processed hundreds of surgical cases with some of the leading clinicians in the US. Complete in-house processing from planning to final prosthetics, by some of the best technicians in the industry, not only allows for an impressive 10-day Synergy turnaround but also gives our surgeons a world class prosthetic support structure for the final.

SYNERGETIC LINK FROM SURGERY TO FINAL

The Synergy workflow creates a predictable link between the surgical plan, converted PMMA, prototype and the final prosthesis. All cases are planned from the final prosthesis back to the surgical plan, this minimizes any potential restorative surprises or complications. The NavaGation™ team is led by experienced technicians who ensures the Synergy workflow is designed to support the final prosthetic solution.



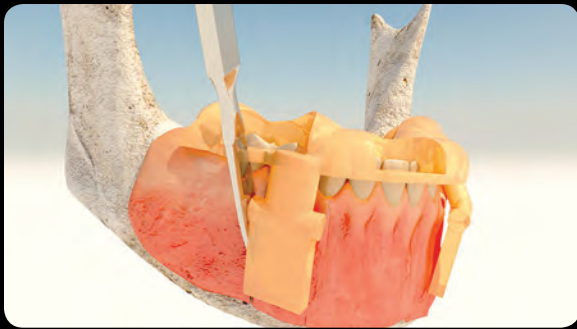
Navagation™ Synergy Quick Reference



DENTATE PATIENT



SEAT TOOTH BORNE INCISION GUIDE



*MAKE VERTICAL INCISIONS AS
SHOWN BY THE GUIDE*



LAY BLOCK REFLECTION

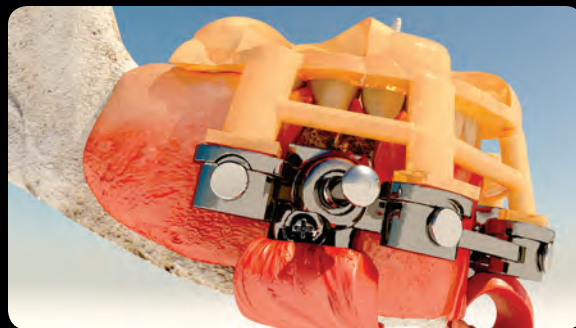


SEAT UKF BASE GUIDE BY HAND TO CONFIRM CLEAN REFLECTION - DO NOT FIXATE

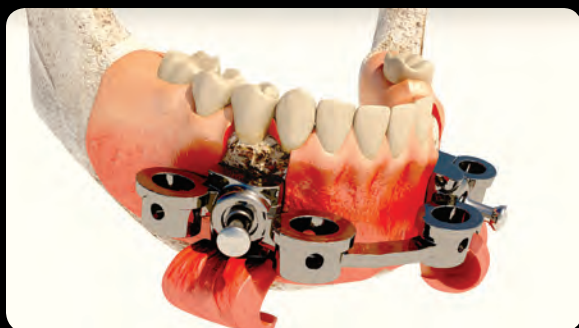




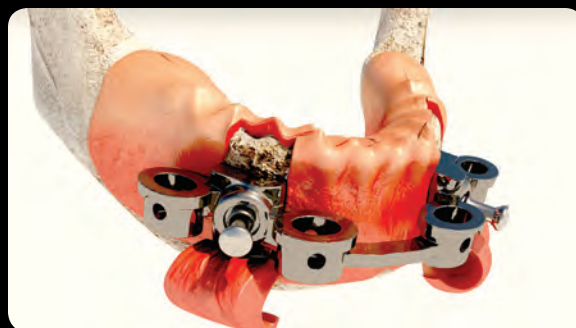
SEAT AND LATCH THE TOOTH
ALIGNER INTO THE UKF



DRILL FIXATION



AFTER FIXATION REMOVE TOOTH ALIGNER



EXTRACT TEETH



SEAT BONE PLANE REDUCTION GUIDE



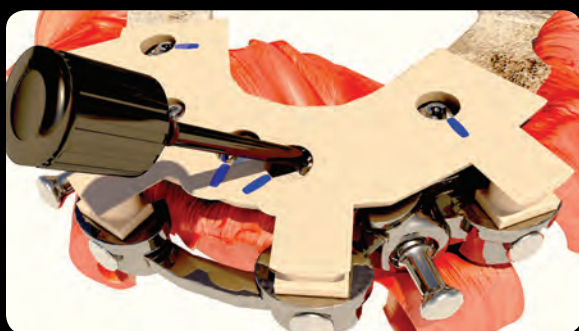
REDUCE BONE TO GUIDE LEVEL



REDUCED BONE



*LATCH DRILL - GUIDE AND PLACE
IMPLANTS WITH GUIDED PROCEDURE*



*LATCH ABUTMENT ALIGNER - POSITION AND
TORQUE ABUTMENTS IN CORRECT ROTATION*



*LATCH PMMA CONVERSION - PLACE TEMPORARY
CYLINDERS AND LUTE PMMA*



REMOVE UKF BASE GUIDE AND SUTURE



*CUT LATCHES FROM PMMA AND REPLACE
CONVERSION*

*For assistance or questions on NavaGation™ please call 844 293 ADS1 (2371)
or visit www.navagation.net*

Sequenced Dual Arch Surgery

The NavaGation™ team has successfully processed numerous dual arch cases, over multiple years, with incredibly predictable results. These cases were processed with a multitude of clinicians, with dissimilar experience levels from around the United States. They found the NavaGation™ Synergy system to be as predictable in single as in dual arch application. Our team will gladly discuss the many unique attributes contributing to this system's effectiveness.

The system allows for a true sequenced workflow and does not require the surgeon to verify bites during the surgical process. Furthermore, the dual arch surgery does not require one arch to be converted before proceeding to the opposing.

The very unique NavaGation™ Synergy system allows for simultaneous processing of both arches. This allows for extractions, bone reduction, implant and abutment placement to dual arch conversions in complete sequence. This feature has proven to produce a more predictable surgical result. It has eradicated the historical bite errors that traditionally occurred when processing each arch independently, in dual arch surgeries.

NAVAGATION™ SYNERGY WORKFLOW

- Seat incision guide on arch of choice
- Make vertical incisions as shown by the guide
- Lay the block refection
- Clean periosteum for passive seat surface
- Seat the UKF base guide by hand
- Confirm passive seating by hand
- Seat the tooth-aligner and UKF to create the "stack"
- Confirm accurate UKF seating by:
- Accurate tooth aligner seating in window cut out – Primary
- Intimate bone to UKF surface integration – Secondary
- Drill fixation and remove tooth aligner



► Repeat above steps for opposing arch

After seating both UKF base guides, continue with a fully sequential surgical process:

- Extractions
- Bone reduction
- Implant placement
- Abutment placement
- Conversion process on both arches

The NavaGation™ Synergy surgical process utilizes the UKF base guide to index and maintain the patient's vertical and bite. Therefore, it does not require bite checks during surgery and has eradicated the need to process one arch at a time. This unique feature greatly increases the predictability and reduces the chair time required for these surgeries. Our NavaGation™ Synergy team is always available to assist our surgeons through this process.

Absolute Dental Lab

Established in 1994, Absolute Dental Services started as a small fixed prosthetics lab in the Triangle area of North Carolina. More than two decades later, Absolute's restorative focus is much broader but their attention to product detail and exceptional customer service has not changed.

Today, Absolute is a true full-service partner, with a team nationally and internationally renowned for their expertise in creating world-class esthetics. Their use of cutting edge technology in CAD and milling as well as their extraordinary dental implant, guided surgery and high-end removables sections, enables them to deliver lifelike and functional dental prosthetics in even the most complex cases.



The company motto, *Perfection Is Not Optional*, holds true and serving their customers with Absolute Excellence has always been the primary focus of the owners, branch partners and team members. They welcome clinicians from all over the country to become part of the Absolute family!

NavaGation™ Team

The NavaGation™ guided surgery division was established in 2014 with the goal to create synergy between the surgeon, restorative and technical teams. Today, with more than 2000 guides and successful surgeries behind them, Absolute is proud to offer their expertise in diagnostic work-up, pre-planning, guide design, processing and chairside support to our clinicians.

By offering a true “prosthetic down” planning approach, our NavaGation™ team has become a trusted partner for surgical and restorative teams across the United States. Advancements in planning software, 3D printing and other technologies like select laser melting, has created a true synergy between the surgical plan and the final prosthetics. Having an experienced technician assist with plan set-up, team review and fabrication of the final prosthesis has proven to create a very predictable workflow.

We invite you to restore your next case with us!





Ceramic Artistry by Yunsoo Kim

Absolute Dental's Signature Prosthetic Team

*NavaGation™ Synergy
the ultimate link between
surgery and final prosthetics*



1-844-293-ADS1 (2371)
ABSOLUTEDENTALLAB.COM