



# ABSOLUTE DIGITAL DENTURES



## **WORKFLOW 1 – Simplified With Existing Denture**

This workflow utilizes the patient's existing denture as a diagnostic starting point. This very effective workflow jump, eradicates the need for a traditional bite-rim / bite registration appointment. In this process, the existing denture (good or bad) is used to establish a base-line VDO and diagnostic starting point for the new denture design. Smile pictures (retracted, high smile and low smile) allows the laboratory to make requested diagnostic changes before proceeding to prototype try-in or final delivery.

### **DATA GATHER**



Existing denture



PVS wash reline

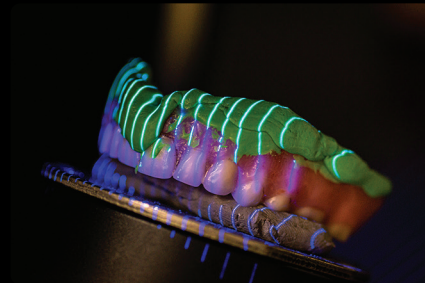
Send smile pics with diagnostic changes

### **DATA CAPTURE**



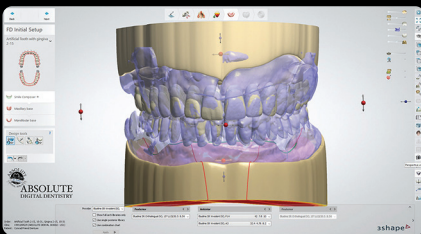
Digitize with Intra-oral scanner

OR



Send to lab to digitize on bench-top

### **LAB PROCESSING**



Digital diagnostic design

OPTIONAL



Remote review with clinician

### **PROTOTYPE OR DELIVERY**



Printed tooth try-in

OR



Final delivery

## **WORKFLOW 2 – Supplied Tooth Try-In**

Clinician supplies approved tooth set up. Absolute will digitize case, split tooth and acrylic base files. Base is printed, and tooth structure is monolithically milled.

Monolithic milled tooth options:

**Signature** – Milled Nano-ceramic (Glass-polymer). Monolithic, low wear with glass-like esthetics

**Premium** – Multilayer double cross-linked polymer. Monolithic, multilayer with high esthetics

**Standard** – Monochromatic double cross-linked polymer. Monolithic with standard esthetics

## **WORKFLOW 3 – Traditional Bite Rim Protocol**

Impression – Custom tray impression – Bite registration with wax bite rim

Printed tooth try-in – Final processing

Tooth options – Fused denture teeth or milled monolithic options

## **WORKFLOW 4 – Immediate Denture**

Clinician sends STL upper and lower with bite OR PVS impressions with bite

Final delivery within 48 hours



## **WORKFLOW 5 – Copy Denture**

Clinician sends denture with PVS wash or STL - Lab digitally separates tooth and base files - Monolithically mill tooth structure and prints base - Final delivery with tooth try-in optional

# **ABSOLUTE DENTURE OPTIONS**

### **IMMEDIATE DENTURE Premium IPN teeth**

Digital Impression or PVS Impression \$275

### **COPY / BACK UP DENTURE : Exact copy of existing denture only**

CAD monolithically milled polymer teeth \$295

### **STANDARD DENTURE: Standard festooning**

Premium IPN teeth or CAD monolithically milled polymer teeth \$350

### **PREMIUM DENTURE: Custom festooning**

High-end premium denture teeth or CAD monolithically milled multilayer polymer \$450

### **SIGNATURE DENTURE: Custom festooning with hand tinting**

Signature with high-end premium teeth or \$750

Signature with monolithically milled Nano-ceramic teeth \$950

COPY DENTURE Ordered within 7 days of final delivery. Exact copy. IPN teeth or milled polymer \$195

Ordered within 2 years of final delivery. No changes can be made to original file or Rx \$275

ADDITIONAL CHARGES   Wax Rim   \$45                      Custom Tray   \$45                      Additional Try In   \$45

GINGIVAL SHADES                      Original / Original opaque / Light pink / Light red pink / Dark red pink

ONE TIME REPLACEMENT WARRANTY 12 Month - Manufacturer Defect Warranty against crack in base or tooth de-bonding.  
Does not cover normal wear or abuse. Original denture must be returned